



(Left) Outdoor living room with fireplace and wood storage

(Opposite) Rectangular stepping stones set in Mexican pebbles lead to stairs of new entry

### Dean McHenry House (1940)

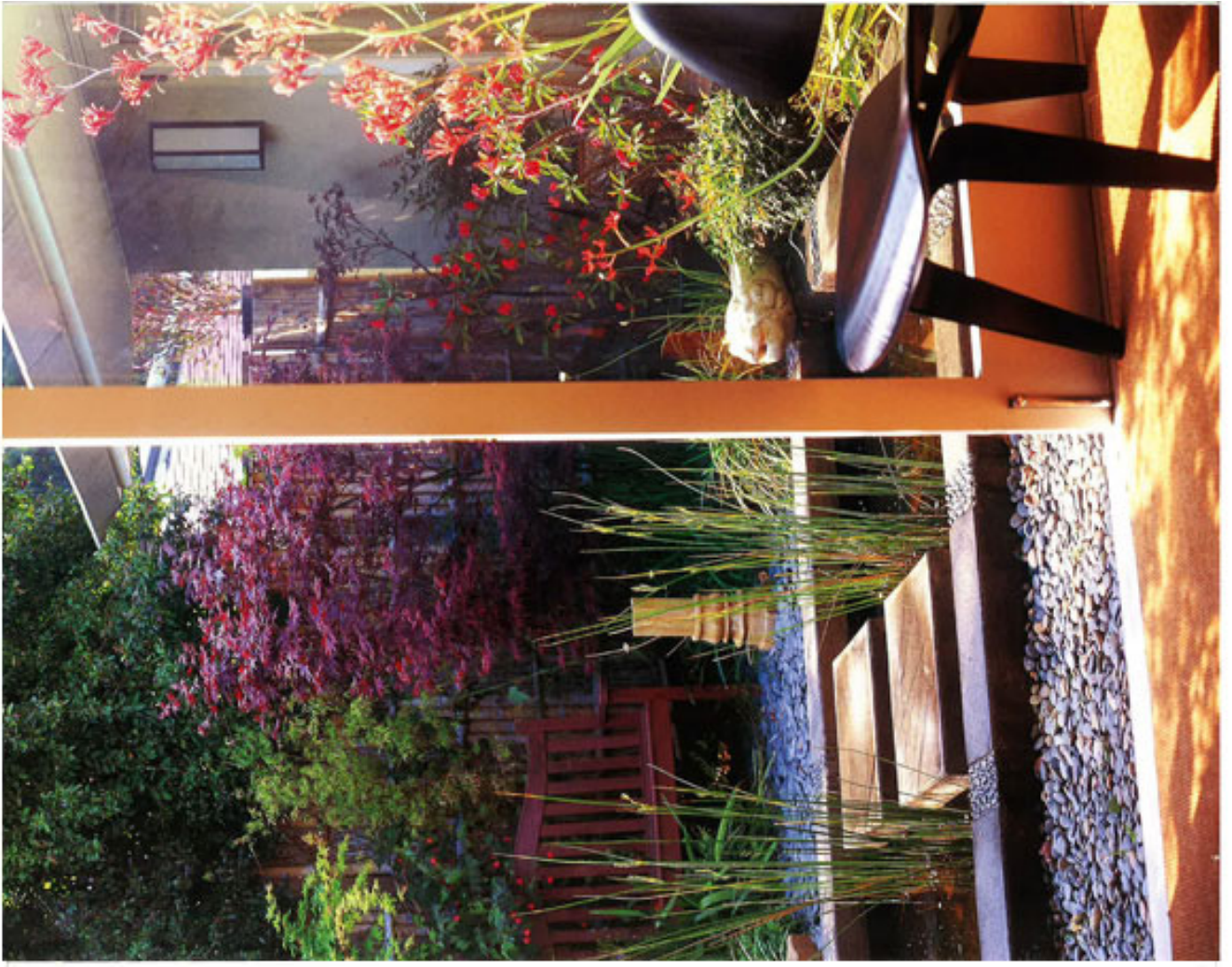
Hanwell Hamilton Harris, architect

Several years ago, Brian Tichenor and Rain Thorp of Tichenor & Thorp Architects purchased the one-story house and through Brian's aunt's association with the Dean McHenry family, they were able to acquire the original house plans. The husband and wife team has used the house and garden as a laboratory for exploring ideas about landscape and architecture. The site, approximately one third of an acre in West Los Angeles, is divided into three levels; the street level at which the garage and original entry to the house is located, the main level, at which the house is located, and the pool level, which is up a set of stairs flanked on either side by potted succulents and cacti.

Hanwell Hamilton Harris's original custom plan created four distinct outdoor courts, in addition to the upper pool garden. Dramatically, every room opens onto a garden, patio or water feature. The living room and kitchen share a patio with an outdoor fireplace, the courtyard off the kitchen functions as a children's play area. On one side of the master bedroom a garden court connects to the studio/guesthouse and on the other, a Japanese garden with a water lily pond. Plant material used in the Japanese garden includes: *Acer palmatum atropurpureum*, "bloodgood" (Japanese Maple), *Argemone 'Big Red'*, *Nandiodendron 'Jana'*, *Abutilon venosus*, *Liriope*, and *Sarcocolla 'dunbarii' 'Royal Burgundy'*. The new entry court is comprised of Mexican river-washed pebbles with rectangular stepping stones that pass through an undulating hedge of *Washingtonia rostrata* forms, *Dodonaea* and *Eriobotrya 'Cooperiana'*. The largest space is devoted to the swimming pool with its own cabana/teahouse which is bordered by a lily pond with an urn-fountain. Mature trees and hedges of *Washingtonia rostrata* forms, *Broussaisia Banana*, *Argemone 'Big Red'*, *Dodonaea viscosa 'Purpurea'*, *Prostrum lenax*, *Trochelium coccineum*, and water lilies surround the pool area.

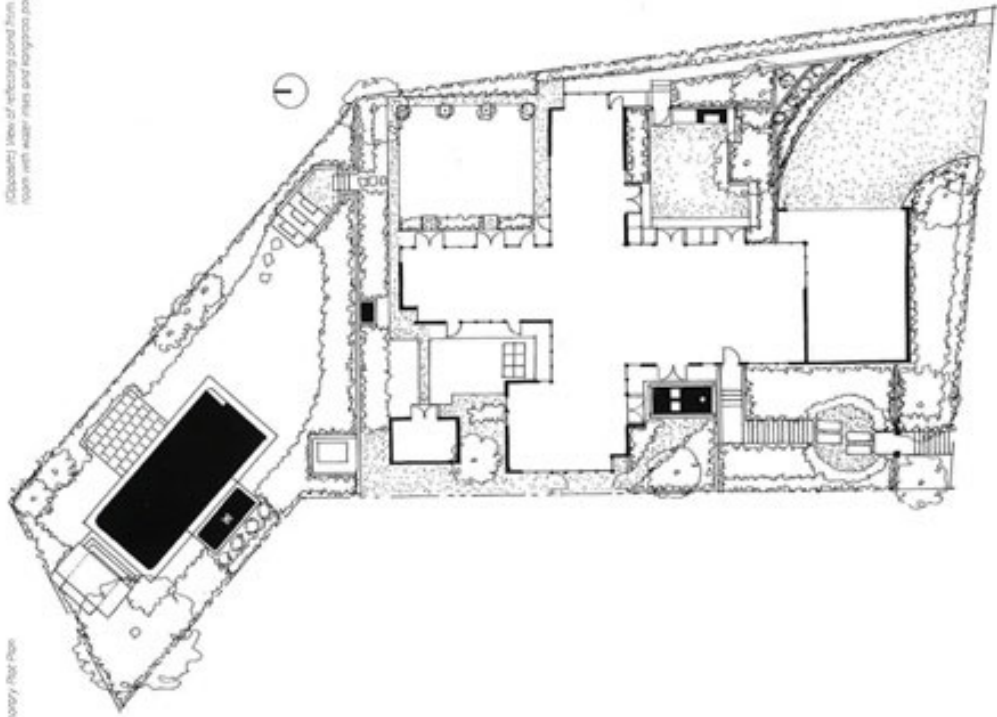






Opposite View of reflecting pool from living room with water jets and landscape plants.

Contemporary floor plan







Above, left: Pond with an fountain spouts at the swimming pool, with plantings of *Conoclinium volubile*, *Phormium tenax*, *Cyperus rotundus*, and *Stylosanthes*.

Above, right: Spout at pool framed by vertical cactus plants, succulents and flowers in pots.



Above, left: View toward square stone pool with the "Moon Crest", *Isagoras chinensis*, *Scirpus japonicus*, *Alismula*, and *Lythrum*.

Above, right: Reflecting pond in Japanese garden with various reeds, bamboo, and ferns.



(left) Pool and pavilion complete  
(above) Designed with large trees

